



HYDE PARK GATE | KENSINGTON SW7

HYDE PARK GATE

KENSINGTON SW7

An elegant and well-presented five bedroom apartment in this well run mansion block. The apartment offers a balance of accommodation all on one level, making it a superb lateral property with excellent views to the south and west.

This spacious apartment is presented in good decorative order with excellent ceiling heights throughout and wood flooring to the principal reception rooms and entrance hall, 24 hr portorage with CCTV and private parking.

LOCATION

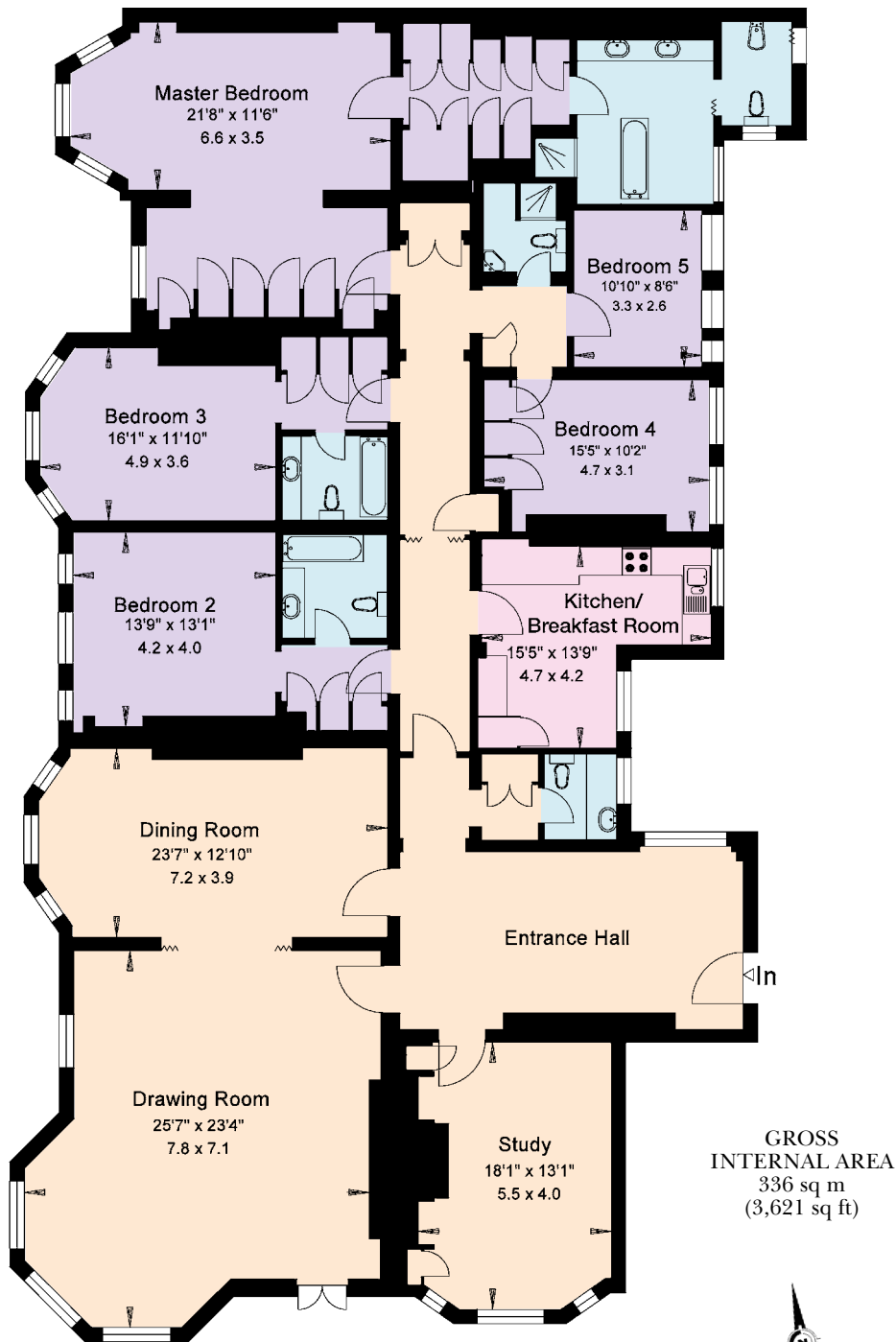
Hyde Park Gate is a quiet private cul-de-sac situated between Knightsbridge and Kensington, only moments away from Kensington Gardens.

ACCOMMODATION AND AMENITIES

Master bedroom suite • 2 guest suites • 2 further bedrooms
Shower room • Drawing room • Dining room • Study
Kitchen • Entrance hall • Guest cloakroom • Lift







SIXTH FLOOR



TERMS

Tenure: Share of freehold

Service Charge: £3,966.33 per quarter

Ground Rent: Approximately £400 per annum

Local Authority: Royal Borough of Kensington and Chelsea

Price: On Application

Viewing: By Appointment with McKee & Co.



These plans are for guidance only and must not be relied upon as a statement of fact. Attention is drawn to the Important Notice.

McKee & Co.

Kynance Place, London SW7 4QS

020 7225 1244

mckee.co.uk

info@mckee.co.uk

IMPORTANT NOTICE

1. Particulars: These particulars are not an offer or contract, nor part of one. You should not rely on statements by McKee & Co in the particulars or by word of mouth or in writing ("information") as being factually accurate about the property, its condition or its value. McKee & Co does not have any authority to make any representations about the property, and accordingly any information given is entirely without responsibility on the part of the agents, seller(s) or lessor(s). 2. Photos etc: The photographs show only certain parts of the property as they appeared at the time they were taken. Areas, measurements and distances given are approximate only. 3. Regulations etc: Any reference to alterations to, or use of, any part of the property does not mean that any necessary planning, building regulations or other consent has been obtained. A buyer or lessee must find out by inspection or in other ways that these matters have been properly dealt with and that all information is correct.