
CHELSEA PARK GARDENS
CHELSEA, SW3

A SPECTACULAR LOW BUILT DOUBLE FRONTED FREEHOLD HOUSE ON THIS PRIVATE ROAD IN THE HEART OF CHELSEA.

This substantial six bedroom house (approx. 6,318 sq. ft. / 587 sq. m) benefits from two off street parking spaces to the front, access to and attractive views over the communal gardens, a large paved garden with water feature, exceptional accommodation and an integral leasehold garage.

The open and easy flowing inter-connected living rooms, with oak doors, offer the option for open plan or private spaces.

The fantastic master bedroom, suite which extends to over 34 ft. / 10 m in width, benefits from a generous dressing room, sitting area and wonderful bathroom. In addition there is an impressive entertainment/media room on the top floor.





CHELSEA PARK GARDENS

It is believed that the land that now forms Chelsea Park Gardens was once part of Sir Thomas More's estate in the 16th century and later after Lord Wharton's ownership the area derived the name Chelsea Park.

The area was gradually built over and this part of Chelsea Park Gardens is believed to have been constructed between 1915 and 1930.

Chelsea Park Gardens is ideally located for all the exceptional shopping, restaurant, bars, transport and other recreational facilities of King's Road and Fulham Road.

South Kensington and Gloucester Road tube stations are approximately 0.8 miles walk away.









ACCOMMODATION AND AMENITIES HIGHLIGHTS

GENERAL:

Exceptionally wide (over 34ft. / 10m wide) double fronted low built freehold house, on this private road in Chelsea, extending to in excess of 6,300sq.ft./585 sq. m.

Off street parking for two cars and integral garage. (The garage is on a lease expiring 2036 and ground rent of £2,000 per annum).

Stunning custom designed cantilevered oak staircase with bespoke balustrades.

GROUND FLOOR:

Entrance Hall with Compass marble floor design and domed ceiling • Reception Room • Large Kitchen superbly equipped, opening on to the Conservatory Breakfast/Dining Room and Formal Dining Room both working around and with access to the Garden laid to stone with water feature • Office/Study • Cloakroom • Access to Integral Leasehold Garage

FIRST FLOOR:

Master Bedroom Suite with Sitting Area both overlooking the communal gardens, wood and mirror panelled Dressing Room, Bateau Style Bathroom • Second Bedroom and En-Suite Bathroom •

SECOND FLOOR:

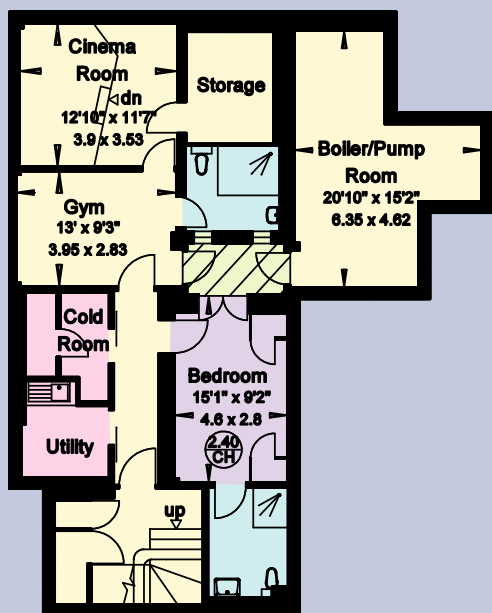
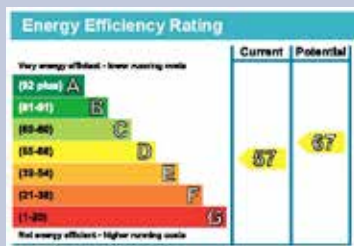
Three Generous Double Bedrooms • Two En-Suite Shower Rooms • Bathroom En-Suite

THIRD FLOOR:

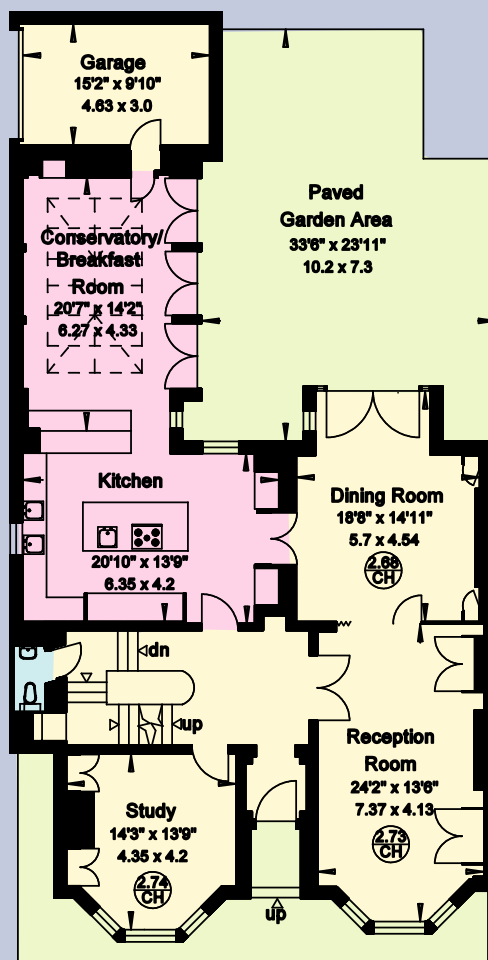
Exceptional ship style Entertainment/Media Room, extending to over 500sq. ft/48sq. m., with large roof light and windows • Potential to be Bedroom Seven if required Bathroom En-Suite • Walk-In Storage Room

LOWER GROUND FLOOR:

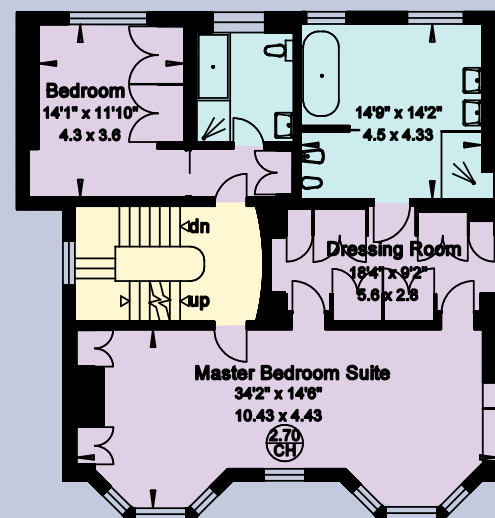
Gym • Cinema Room • Cold Room • Utility Room
Bedroom and En-Suite Shower Room • Steam Room • Storage • Boiler Room



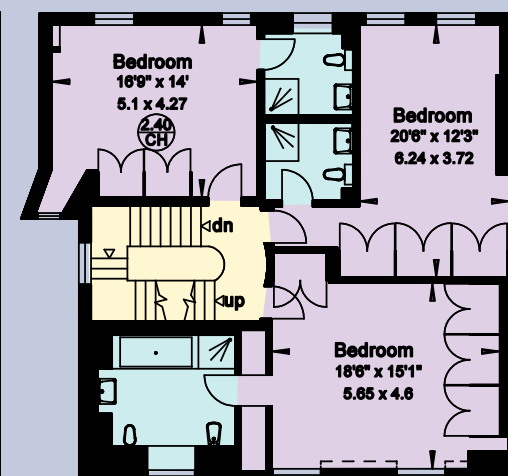
Lower Ground Floor



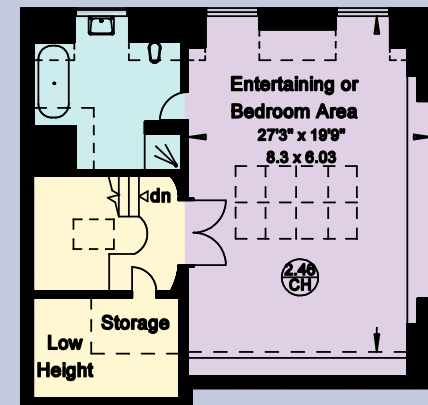
Ground Floor



First Floor



Second Floor



Third Floor

Chelsea Park Gardens

London SW3

Gross Internal Area = 600 sq. metres/ 6468 sq. feet
(Including Restricted Heights & Garage)

Gross Internal Area = 587 sq. metres/ 6318 sq. feet
(Excluding Garage)

McKee & Co. | Kynance Place | London SW7 4QS
www.mckee.co.uk | info@mckee.co.uk | **020 7225 1244**

McKee & Co.